


Name:

Due Date:

Political Cartoon

Imagine that you are a colonist in one of the thirteen colonies just before the outbreak of the revolutionary war. Determine what allegiance you have. Are you a loyalist who supports the British king and wants the colonies to stay under his leadership? Or are you a patriot who rejects British rule and wants the colonies to become a new independent nation? With this perspective in mind, draw a political cartoon based on one of the major causes of the American Revolution. While planning your drawing, be sure to conduct research on the cause you have chosen and identify how the loyalists or patriots felt about it. You should also familiarize yourself with the attached political cartoons that were popular during the pre-revolution period such as: The Colonies Reduced, Poor old England Endeavoring to Reclaim his Wicked American Children, The Bloody Massacre, and Bostonians Paying the Excise-Man. Limit your use of words, but you may include brief captions and/or labels on objects. Use symbolism and include a creative title.

- | |
|--------------------------------------------------------------------------------------------------------------------------------------------------------------------------------------------------------------------------------------------------------------------------------------------------------------------|
| <p>Choose a cause of the American Revolution:</p> <ul style="list-style-type: none"> - Proclamation of 1763 - Sugar Act - Stamp Act - Townshend Acts - Boston Massacre - Boston Tea Party - Quebec Act - The Intolerable Acts |
|--------------------------------------------------------------------------------------------------------------------------------------------------------------------------------------------------------------------------------------------------------------------------------------------------------------------|

			
	Emerging / Developing	Proficient	Extending
Significance		Assesses significance with a broad and clear understanding.	
Continuity & Change		Compares continuity and change in a connected and organized way.	
Cause & Consequence		Analyzes cause and consequence with accurate and detailed reasoning.	
Perspectives		Explains perspectives with a logical and justified interpretation.	

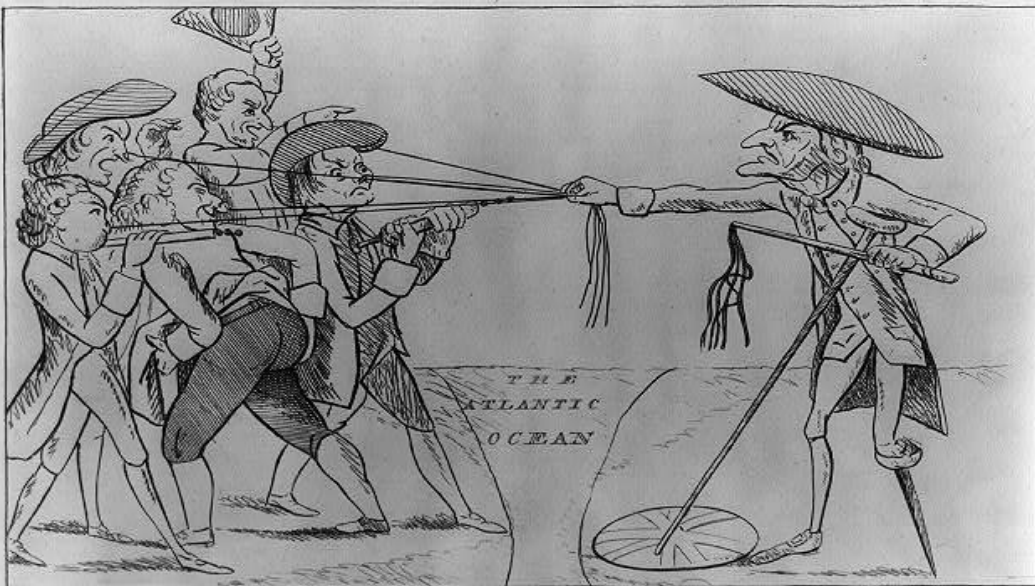
Self-Assessment:

Teacher-Assessment:

The Colonies Reduced.
 Designed & Engraved for the Political Register.



V. 2



*Poor old England endeavoring to reclaim his wretched American Children.
 — One therefore in ENGLAND means 13 free to go with a Staff*

